



What have we been up to??

What a way to kick off the 2023 season with CLIC! For the first time in 3 years on May 26, 2023, Inland Fisheries and Wildlife (IF&W), CLIC, and Houlton Elementary School sixth grade teacher Jill Porter and 25 of her lucky students released a combination of 14-month-old salmon and salmon fry totaling over 2400 salmon into East Grand Lake. With the help from IF&W we were able to distribute some of the 14-month-old salmon in sporadic parts of the lake while the students released their 366 salmon fry from the shore line. CLIC put on a yummy hot dog lunch for all in attendance and accompanied the class to the American and Canadian borders where they were able to chat with custom and border protection agents. While there, the students were able to ask questions and were given pamphlets and flags. We truly look forward to another great adventure next year and hope more schools will be able to join in the fun. Thank you to all that participated and made this event come to life once again.



Fish release crew and helpers

Don't miss out

CLIC is hosting its annual meeting on August 19th at First Settler's Lodge in Weston Maine from 9-10:30. We are fortunate to have a speaker this year. Inland Fisheries and Wildlife Regional Biologist Kevin Dunham has volunteered to come to the meeting and give us a presentation and answer some questions from those that are able to attend. This would be a great time and place to get some great information. Please mark your calendars. We Look forward to seeing you there!

What waters are associated with CLIC?

Great question! CLIC focusses upon the following waters:

- ~ North Lake ~ Monument Brook Stream ~ The Throughfare ~ East Grand Lake ~ Mud Lake ~ Spednic Lake ~ Palfrey Lake ~ Deering Lake ~ Bracket Lake

For more information on how to become a CLIC member or volunteer, or to get on our mailing list, contact CariAnn Michaud via phone: 207-538-2489 or email: CLICBoard@gmail.com

Fun Facts about CLIC....

CLIC owns and maintains the commercial binoculars, metal stand and guestbook at Million Dollar View.

We have agreements with Maine Fish and Wildlife and the Maine Department of Transportation to place and maintain the boating signage deployed each season in the Throughfare.



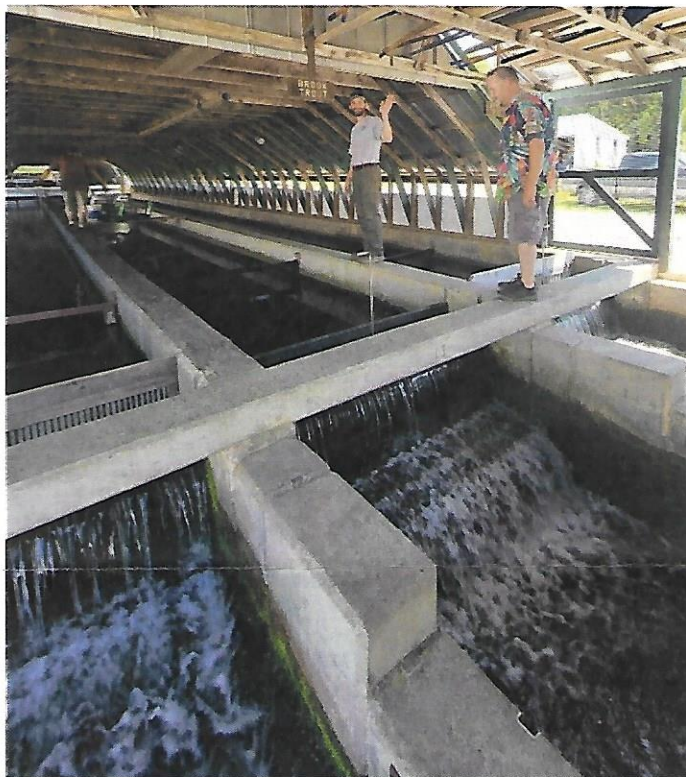
CLIC Road Trip to the Enfield Fish Hatchery

On June 23rd five CLIC members participated in an extended tour of the Maine Department of Inland Fisheries and Wildlife fish hatchery and rearing station located in Enfield, Maine. Those CLIC members were Julie Decker, Ed Decker, CariAnn Michaud, Jeremy Michaud and David Townsend. Ed, Jeremy, and David had a special interest in attending this tour because all three are members of CLIC's Fisheries Committee. This tour was led by Fish Culture Supervisor, Jarod Hjort. Two and a half hours after it began, Jarod informed our group that ours had been the longest tour he had ever conducted.

Maine F & W is subdivided into seven administrative regions around the state, and they are labeled from "A" to "G." Most of these regions have a fish hatchery and/or a fish rearing facility. The Enfield facility which we toured has both, and they are located within "Region F," also known as the "Penobscot Region." CLIC chose to tour this hatchery and rearing facility because East Grand Lake is also located within Administrative Region F, and CLIC would like to intensify its working relationships with the hatchery operation, and with the other Maine F & W

staff members who work at the Regional Headquarters which is also located at Enfield, Maine.

In total, the State of Maine has eight fish hatcheries and, together, they produce about one million fish per year for stocking Maine's many brooks, streams, rivers, and lakes. The Enfield hatchery and rearing facilities are the second largest in the state and annually produce about 200,000 fish for release. Maine F & W oversees the production and stocking of six species of fish: brook trout, brown trout, lake trout (or togue), splake, rainbow trout, and land locked salmon. The Enfield operations focus upon brook trout and land locked salmon.



All six of the species noted above are cold water fish. Therefore, one of the greatest challenges for all of Maine's fish hatcheries and rearing operations is ensuring that the water habitats which they create are sufficiently clean and cold for the fish within, to remain healthy, feed regularly, and grow quickly.

Although the hatchery which CLIC members toured was first established in 1909 at another site, it was relocated to the Enfield properties in 1958 due to the perpetual flow of cold, clean, clear water coming from the depths of

Left to right: Edwin Decker, Jarod Hjort, Jeremy Michaud



Cold Stream Pond. This “pond” is a 3600-acre lake to which the Town of Enfield, numerous cottagers and this fish hatchery have all located in very close proximity. When first settled in 1820, this area was actually named “Cold Stream” and, even today, the Town claims that it has the cleanest water in the State of Maine.

To take full advantage of the cold, clean and clear water of Cold Stream Pond, Enfield’s fish hatchery and rearing facility has laid two separate intake pipelines into these waters. One takes in water which is located close to the pond’s surface, and the other intake is located well down into the cold depths of the pond. Both pipelines have valves which permit staff members to mix these waters to achieve the optimal temperatures for the species which are being hatched or raised, or for the temperature best suited to the particular hatching or rearing activity being monitored.

The sizes of the fish which CLIC members viewed during our tour ranged from about one and half inches in length, up to about 18 inches. Those larger fish were called “brooders,” and they supply eggs and fertilization for the hatchery operation. Brooders are

usually between two and half to three years of age. One tank located at the hatchery section, which our tour group was invited to peer into, contained about 10,000 land locked salmon. These fish were about one and half inches long, and they were about two months along from their hatching date.

Generally, Maine Fish and Wildlife stocks fish into Maine waters in the Spring (April and May) and in the Fall (Sept. and Oct.) Most stocked fish are just over one year of

age. Typically, Spring Yearlings are 7 inches in length and Fall Yearlings are about 10 inches long at release. It is the Fisheries Biologists, assigned to each region, who specify the types, strains, and size of fish to be stocked for each area, the stocking location, and number to be released per location. Due to fact that a particular strain of fish species will be specified, and because most stocked fish are over one year of age, stocking orders are placed with the



hatcheries at least two years in advance of the planned release-date for the fish ordered. While still in the rearing stage, about half of all stock at the rearing station have their fins (slightly) clipped in a distinctive manner (which varies each



year), to facilitate the identification of its strain, age, and rearing history, if a particular fish is examined for length, weight, and state of health (or cause of death) after its release.

The CLIC members who took this tour would certainly recommend it to anyone interested in learning more about the fish hatching and rearing programs conducted by the Maine Department of Inland Fisheries and Wildlife. The Enfield Hatchery is open to the public and conducts tours between the hours of 8am and 3pm. Those interested in arranging a tour are asked to phone and book their tour in advance by calling the hatchery at 207.732.3676.

Thank you President David Townsend for such a great report!

2023 Stocking Report for East Grand Lake

In 2022, the Maine Department of Inland Fisheries and Wildlife stocked 5,190 **LL Salmon** (all 7 inches in length) in East Grand Lake. These Spring yearlings were released at three separate locations around the lake, within the geographical limits of Orient, Weston, and Danforth.

This Spring, F & W released 6,300 **LL Salmon** (all 7") in East Grand within the same three geographical limits. This is an increase of 1,110 more salmon than were stocked in 2022.

Also in 2022, Maine Fish and Wildlife stocked a total of 6,300 **Brook Trout** in EG Lake. To reach this total for the year 2022, 4,500 were released in the Spring (all 10" in length) and 1,800 were stocked in the Fall (all 13 inches). The thirteen-inch-long Brook

Trout were raised at the Enfield Hatchery, but the other Brook Trout and all the LL Salmon noted above, were reared at the Grand Lake Stream Hatchery. Both hatcheries, and associated fish rearing facilities, are operated by Maine Fish and Wildlife.

So far in 2023, F & W has stocked 3,900 **Brook Trout** in East Grand Lake (all 9" in length). This coming Fall, likely in late September or early October, 600 additional Brook Trout will be stocked in East Grand Lake. Thus, for the year 2023, a net reduction of 600 Brook Trout is planned for EG Lake as compared to the trout stocking totals for 2022.

Also, as previously reported within CLIC's very first issue of **The CLIC Quarterly**, last May 26th four representatives from the Maine Department of Inland Fisheries and Wildlife, and many reps from CLIC, joined with 25 grade-six students from Houlton Elementary School, and their teacher Jill Porter, to participate in an event which has historically been referred to the 'School Fish Tank and Fish Release Project' Transported within an insulated container, the students had brought 366 **Land Locked Salmon Fry** (each about 1.25 inches long) to release them into the waters of The Thoroughfare – the narrow waterway which connects North Lake and East Grand Lake. Within their classroom these students had overseen the hatching and early rearing of these fish, from eggs provided by the Maine, Fish & Wildlife hatchery located at Grand Lake Stream. Following the release of the salmon fry, everyone was treated to a hot dog lunch and cold beverage.



For 2023, no additional, or other species of fish, will be stocked within East Grand Lake by Maine Fish and Wildlife. Likely, any additional fish stocking, by any other person or organization, would be unlawful. In case anyone is wondering, the Department of Fisheries of the Government of New Brunswick annually stocks a combined total about 200,000 fish (LL Salmon and Brook Trout only) in provincial waters, but none are stocked within any of the waters of the five Chiputneticook Lakes. (Reported by: David Townsend)

What a site to see – CariAnn Michaud

Most of us Mainers from Aroostook County have heard of and visited a very special spot that we call "Million Dollar View." What started out as a restaurant and gift shop also has a beautiful scenic view just next to it. CLIC owns and maintains the commercial binoculars, metal stand and guestbook at Million Dollar View. I am not sure how many people that signed the guest book have taken the time to look through it. CLIC places these guest books here three times a year at minimum due to all the lucky visitors. These visitors come from all over and take the time out to appreciate the view and share where they come from. We have had people from all over Maine and Canada as to be expected however, there are signatures from Cape Town South Africa, Ireland, China, England, and all over the United States as far and wide as Texas, California, North Dakota, Florida and just about everywhere in between. It is surely a spot to bring friends and family when they come to visit. There have been anniversaries, wedding proposals, and

memories shared. Definitely an experience worth having.



Billy and Nan

One of the fun things to see is an island on East Grand Lake popularly known as "Billy and Nan" for the two trees that are seen from the Million Dollar View. A little bit of history about Billy and Nan is that it is officially called Greenland Island. In 1953 Woodie Wheaton landed on this island with his fishing party for a lunch and found an old derelict building of the old hermit, now dead for many years. Woodie Wheaton land trust bought it and cleaned it up filling plastic bags of bottles and cans, bent iron and decades of old rubbish. It is still a favorite shore lunch spot for fishing guides and their guests.



Half Moon Island Picnic -Julianne Spradlin

Another successful picnic for CLIC to host. What a great way to spend the afternoon with friends and family. CLIC had a wonderful outcome for this year's picnic. With over 175 guests, Halfmoon Island was packed! After docking their boats, families were greeted by CariAnn Michaud, signing



them into our picnic, and for our Canadian friend's convenience, Officer Greg Miller was there for them to report, without any added steps. Soon after, they followed the irresistible smell of cooking hot dogs and french fries. Jay Spradlin and Jeremy Michaud loaded their plates up with our signature red Maine hot dogs and sent them off with a smile. The guests followed the line leading to Christen Spradlin, who salted and served boats chock full of CLIC's signature french fries, fried up by our very own V.P. Kathy Conley and Pres. David Townsend. With one hand open,



they chose from a wide variety of soft drinks on ice. Now, fully loaded up, families enjoyed their meals and explored the waters of Halfmoon Island, thankful for a

sunny break from our relentless rain this year. With full bellies, they pushed off the shore and departed from this year's 2023 CLIC Annual Picnic, with new friends and happy memories made.

Water Quality and Testing – John Johnston

The Water Quality Committee continues to slowly expand its lake monitoring program. Currently, we are involved in two different monitoring programs. We are still monitoring water clarity by utilizing the Secchi Disc method. This involves slowly dropping a weighted black and white disc into the water and measuring how deep it can be visualized in its descent by using a viewing scope. The distance is recorded, and results are sent to Lake Stewards of Maine. Our results have consistently been in the very good range.

Our newest program is in the beginning phase of the invasive plant identification program sponsored by Lake Stewards Maine. We had 3 volunteers attend an online 3-hour lecture that is the introduction to identification of Invasive and Normal aquatic plants seen in Maine and New Brunswick. It quickly became evident that to become proficient in this program it is going to take a lot of studying/practice and further instruction. Hopefully we will eventually gain the experience and expertise to help our lakes stay clean and healthy.

We still are short on volunteers willing to participate in these programs. If anyone would like to participate in any of these endeavors, please feel free to contact me at jjohnston1@maine.rr.com .



More volunteers: As we plan activities for this summer, we have only two active volunteers performing water tests. If we are going to expand testing, monitoring, and our expertise, my committee needs more volunteers. Experience in water testing is not necessary: training will be arranged. If you have an interest in helping, please contact John Johnston via phone: 207-839-3454 or email: jjohnston1@maine.rr.com

If you are interested in becoming a volunteer for any of our committees or in becoming a CLIC member, please feel free to contact CariAnn Michaud at 207-538-2489.

Join our team!

Border Crossing Schedule for 2023 Summer Season

Orient, ME Border Station -Summer 2023 Hours (Eastern Standard Time)

May 29th – Sept. 4th = 7AM to 7PM – 7 Days a Week

Forest City, ME Border Station -Summer 2023 Hours (Eastern Standard Time)

May 29th – Sept. 4th = 8AM to 4PM -7 Days a Week

Fosterville, NB Border Station- Summer 2023 Hours (Atlantic Standard Time)

May 29th – Sept. 4th = 8AM to Midnight * – 7 Days a Week

Forest City, NB Border Station -Summer 2023 Hours (Atlantic Standard Time)

May 29th – Sept. 4th = 9AM to 5pm -7 Days a Week

**Note that travelers seeking to enter Canada at the Fosterville Border Crossing are permitted to drive beyond the Orient gates and present themselves (until Midnight AST) for entry at the Fosterville station, despite the fact that the Orient Border station may be closed.*



CLIC Committees & Chairs - 2023

- # Bylaw review
 - Chair: David Townsend
- # Communications
 - Co-Chairs: Frank Bolton and CariAnn Michaud
 - Members→ Ann Barnes
- # Water Quality and Testing
 - Chair: John Johnston
 - Members→ Jeremy Michaud
- # Membership
 - Chair: USA- CariAnn Michaud – Chair Canada – David Townsend
- # Save the Dam
 - Chair: David Townsend
- # Fisheries
 - Chair: David Townsend
 - Members →Pete Chase and Jeremy Michaud
- # Special Events
 - Chair: Kathy Conley
 - Members→ Ann Barnes, Jeremy Michaud, CariAnn Michaud, Ed Decker, David Townsend
- # CLIC Equipment
 - Chair: Kathy Conley
 - Members→ David Townsend, Ed Decker, Jeremy Michaud
- # Nominating Committee
 - CLIC’s dually elected officers
- # Navigation Markers and Buoys
 - David Townsend – contact
- # Sunshine and Sympathy Club
 - Chair: Ann Barnes

To contact CLIC you can reach us through email at Clicboard@gmail.com or mail us a letter to:

CLIC
 82 Schoolhouse Rd.
 Unit 30
 Orient, ME. 04471

Once again, CLIC would like to give a special thanks to those that gave donations at the picnic this year. Those of us board members and Committee members are all volunteers, and we appreciate all the help and support the lake communities bring.



Executives of the Board	Board Members
President – David Townsend	John Johnston
Vice Pres – Kathy Conley	Ann Barnes
Treasurer – Ed Decker	CariAnn Michaud
Secretary – Frank Bolton	